



Perry Valley Grange #1804, Inc. Newsletter

West Juniata Parkway & Owl Hollow Road, Millerstown, PA 17062

2011-2012 Perry Valley Grange Officers



2011-2012 Perry Valley Grange Officers

From Your President

Grange Success Is Not the Officers' Job Alone

Our Grange recently elected and installed its officers for the coming 2-year term. Most of those who have agreed to serve have been serving in various positions of responsibility for many years and their continued devotion is much appreciated.

However, keeping our Grange active and progressive is not just the responsibility of these officers. If our Grange is to continue growing and making a positive impact on our community, all members need to carry their fair share of the workload. The Grange needs your attendance at meetings, help with fund raising events,

and support of community service activities. Every time you say ***"I'm too busy.....let someone else do my share of the work"***, the Grange is diminished because we accomplish less.

As you read through this newsletter, you may notice that some of our traditional projects are missing (e.g. the Thanksgiving Pie Sale and the free Thanksgiving Day dinner). **Why is this happening!?**

(continued on page 2)

Thoughts from the President

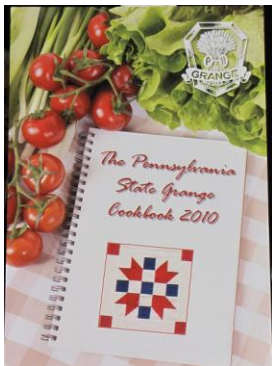
(continued from page 1)

The leadership of the Grange has planned our organization's annual schedule and decided that some of our activities are no longer possible with the number of active members willing to participate and take some part of the responsibility. This state of affairs is directly related to how much time and effort you and all members are willing to give to the Grange.

The Grange cannot function as fully or as well without the enthusiastic support of many different members, each bringing their unique skills and abilities to the organization. The challenges of keeping our Grange viable is made much easier with more people involved, even if each is involved in just a few different activities or events.

Ask yourself this question – **What would the Grange be like if every member did as much as I do to insure its success?** If you're pulling your share of the load, thank you! If not, then only you have the power to change that!

Doug Bonsall,
President



New PA GRANGE COOKBOOK Available

Just released in October 2010, this new PA State Grange Cookbook has over 1,500 recipes from Grange members and friends throughout Pennsylvania covering:
*Appetizers & Snacks,
Beverages, Breads,
Casseroles, Desserts, Diabetic*

*& Low Calorie, Jams & Jellies, Main Dishes, Pickles,
Salads, Soups & Stews, This n' That and Vegetables.*

Our Grange has obtained several cases of the books just in time for holiday gift giving. The cost is \$18/book, available at the Grange Hall during any activity or by calling Doug Bonsall at 921-1957. If individual books must be shipped, there will be an additional shipping fee of \$3 per book.

In Loving Memory

Once more our fraternal circle has been broken with the sudden passing of Brother **Charles "Charlie" Page**. The Grange charter will be draped in his memory at our November 5th meeting.

Fall Family Fun Night



The last fellowship meal of the season in the Grange's outdoor pavilion began our October 8th Fun Night.



After a game of Harvest Bingo and the distribution of door prizes, members and friends were invited to enjoy a multi-generational hayride.



There was just a bit of nip in the air that evening, so everyone bundled up as they eagerly anticipated the wagon's departure.

2011 Grange Dues Now Payable

The vast majority of our Grange's annual receipts come from fund raising activities. It is thanks to the hard work of many dedicated members that our organization is able to raise so much money and do so many good things in the community.

The annual dues paid by members are a smaller, but still very important, part of our income. Dues support the local, state and national levels of our organization and enables the Grange to maintain a presence the local community and in our state/national capitals. A significant portion of Grange work done at the state and national levels is in the area of legislation, representing our interests and concerns.

There is no change in the amount of dues for 2011. For adult members, \$5 of your dues remains at the local level. Your dues for 2011 are now payable as follows:

Adults \$40
Youth..... \$12

If you pay before January 1st, you will save our secretary the work and expense of completing and mailing an individual notice to you.

From time to time members and friends of the Grange contribute gifts above and beyond annual dues to give a special boost to the Grange or one of its specific projects. Especially for those members who are unable to help with the projects themselves due to illness, age, schedules or distance, the contribution will be a way you can get personally involved. You may complete and submit the form printed below to pay your 2011 dues and/or make an additional donation.

Name(s) _____
Phone _____
2011 Dues @ \$40 per adult.....\$ _____
2011 Dues @ \$12 per youth.....\$ _____
Additional Contribution\$ _____
Total enclosed\$ _____
Please make check payable to: Perry Valley Grange
Mail to: Carol Gantt, 1692 Keystone Way, Newport, PA 17074

Next Grange meeting....Nov. 5th

Please note the change of date from our usual 2nd Friday. This will be a business meeting with draping of the charter, reception of new members and a program about South America. Our own Linda Byers recently vacationed in Brazil and Argentina and will share pictures and stories from the oceans, rain forest, mountain, glaciers and people.

Business Sponsors

Perry Valley has a category of associate Grange membership that enables local businesses to support our work in the community. The number of **Business Sponsor Members** continues to grow and in 2010 we have 49. This membership helps the Grange and we help our business sponsors by advertising their support in our bimonthly newsletter, on our website and on the main bulletin board in the Grange Hall.

If you know of a business that might be interested in this type of partnership, please talk to them about becoming a **Business Sponsor Member** of Perry Valley Grange. Bill Cameron, our Membership Chair, can provide you with the application and details about the business sponsor supplying us with their advertising information. A letter inviting local businesses to join the Grange or to renew their membership will be sent in mid-November. The 2011 Business Sponsor fee remains at \$60.

Celebrating Special Days



November Birthdays

- 19 Douglas Morrison
- 27 Leslie Byers
- 28 Twyla Courtot

December Birthdays

- 2 Ralph Lesh
- 5 Shirley Delancey
- 8 Robert Cauffman
- 10 Boyd Delancey, Lee Morrison
- 15 Helen Cox
- 21 Louise Pennay
- 29 Barbara McMillen

November Anniversaries

- 29 John & Viola Byers

December Anniversaries

- 7 Ken & Peg Bolton

Please let **Peg Bolton** know when you are aware of a Grange member who should be remembered with cards in times of illness or death in the family. Her phone number is **589-3897**.

December Meeting.....There will be no regular Grange meeting in December. Instead, we have planned "Dinner Out" on Wednesday, December 15th at the "Bread of Life Restaurant in McAlisterville.

Installation of Officers

The Grange is a fraternal organization with a rich ritualistic history. While our regular meetings today do not include the use of all the traditional ritual, the installation of officers held every two years is one of those times when we look forward to hearing, seeing and participating in the full ritual of the installation ceremony. Sister Anna May Snyder Nauss of Mechanicsburg was the installing Officer at this event held September 10th following a fellowship dinner in the pavilion. All other Granges in Perry County were invited to participate in the evening and we are pleased that Oliver Grange joined us to be installed.



Masters of Perry Valley & Oliver Granges receive their installation charges



Installation Team Members

Apple Dumplings for Community Park Fall Fest



Rolling the Dough



Paring & Coring the Apples



170+ homemade apple dumplings were made and donated to the Millerstown Area Community Park for their annual Fall Fest in September.

Grange Business Sponsors Deserve Your Support

RED HILL SUPPLY

717-567-2009
WOOD PELLETS, MULCH, & SHEDS

a division of Red Hill Properties, LLC

57 West Shortcut Road
Just off Rt. 322, Newport Exit
Newport, PA 17074

PERRY COUNTY LAND & CATTLE CO.

Bill & Marti Roberts
Homestead Road
Newport, PA 17074
717-567-7216

N.O. Bonsall Sons, Inc.

223 W. Juniata Parkway • Millerstown, PA 17062

nobs@pa.net



Toll Free: 800-338-9740
Phone: 717-589-3146
Fax: 717-589-9972



Lana's Flower Boutique

Featuring Unique Custom Designs

66 S. 2nd St. • Newport, PA 17074
717-567-7942



MARK of EXCELLENCE
AWARD WINNER

John S. Register
President

Phone (717) 535-5121
Fax (717) 535-5343

REGISTER CHEVROLET INC.
10 E MAIN ST
THOMPSONTOWN, PA 17094

Toll Free 800-922-4914
www.registerchevrolet.com
registerchevrolet@yahoo.com



Allen E. Hench

Attorney At Law

(717) 567-3139
1-434-960-7413 Cell
Fax (717) 567-3130

220 Market Street, Newport, PA 17074
Email: attorney@pa.net

Wills, Trusts, Estate Administration, Estate Planning, Elder Law,
Deeds, Settlements and Closings, Title Search & Title Insurance

RELIABLE SINCE 1895



DAVID M. MYERS FURNITURE

Second & Walnut Streets
Newport, PA 17074

(717) 567-3138

J. P. RUSSELL & SON INC.

JIM RUSSELL
Owner



FUEL OIL
GASOLINE
DIESEL
KEROSENE
MOTOR OILS

Millerstown
Phone: 717-589-3211
Fax: 717-589-7990

YOUR DISTRIBUTOR SINCE 1939

Please Patronize Our Grange Business Sponsors

Visit one of our financial specialists.

Mifflintown
Mountain View
Port Royal
McAlisterville

Monument Square
Water Street
Wal-Mart Supercenter
Richfield

Burnham
Gardenview
Blairs Mills
Millerstown

The Juniata Valley Bank
YOUR BANK OF CHOICE

717-436-8211

FDIC

www.jvbonline.com



"OUR SERVICE DOES NOT COST, IT PAYS"

LESH AUCTION CO.
COMPLETE AUCTION SERVICE
AU-002093-L

R. J. LESH, JR., CAI
NEWPORT, PA 17074
(717) 567-3182 / 567-3523

SPECIALIZING IN ESTATES,
LIQUIDATIONS, REAL ESTATE,
AUTOMOTIVE & CONSTR. EQUIP.

STECKLEY'S PET CENTER
32 S. 2nd ST. Newport, PA 17074
(717) 567-6100
Mon. Tues. Thurs. & Fri. 9AM-8PM
Wed. 9AM-6PM Sat. 9AM-4PM
Ron Steckley Owner

GILLS
Floor Covering

Your Satisfaction Is My Success

CARPET • VINYL • HARDWOOD
LAMINATE • CERAMIC TILE

717-567-3716
Steven E. Gill

Call Anytime
For Free Estimate

BELMONT INSURANCE, INC.
Business & Personal Insurance

TOM BELMONT

**BUSINESS AND
PERSONAL
INSURANCE**

(717) 567-6060 Office
1-866-648-3891 Fax
1-800-472-2693 Toll Free
tom@belmontinsure.com

27 S. SECOND ST.
NEWPORT, PA 17074
www.belmontinsure.com



Trophies - Awards - Engravings
Ribbons - Certifications - Clocks

PERRY HOUSE OF AWARDS
YOUR NEEDS ARE 1st PLACE WITH US

Robert K. Wright

Hours: Tuesday, Wednesday, Thursday, Friday - 9 A.M. - 5 P.M.
Saturday 9 A.M. - 1 P.M. Evening Hours by Appointment
1 Mile East of Newport on Old Route 22

80 Juniata Parkway East
Newport, PA 17074

www.perryhouseofawards.com

Phone:
(717) 567-6017

E-Mail: dwright@countrylink.net

LATCHFORD'S SAW

Sales and Service
Juniata Parkway West
Newport, PA 17074
567-3608

DIXON

STIHL

SNAPPER

T-F 9-6 • SAT 9-2 • CLOSED SUN & MON

Authorized Briggs & Stratton and Tecumseh Dealer



BRATTON INSURANCE AGENCY

3 NORTH MARKET STREET
BOX 373
MILLERSTOWN, PA 17062
TELEPHONE: (717) 589-3278
FAX: (717) 589-7482

NANCY S. BRATTON

DAVID A. BRATTON

Support our 2010 Business Sponsor Members



W.J. Moore, Inc. Insurance Offices

Phone: 717-582-2189
PO Box 310
New Bloomfield, PA 17068

Millerstown Veterinary Associates

807 Sunbury Path
Millerstown, PA 17062

Phone: 717-589-3111

Liverpool Old Mill Antiques

413 North Front Street
Liverpool, PA 17045

Phone: 717-444-7550



ORRSTOWN BANK

A Tradition of Excellence

Newport 567-3414
Red Hill 567-6555

Duncannon 834-3137
New Bloomfield 582-8188

www.perrycounty.com

Millerstown Motors

22 North Market Street
Millerstown, PA 17062

Samuel J. Potter (717) 589-3112
President

717-226-2247

717-438-3618

Stydinger Bros. Excavating

55 Stydinger Circle
Millerstown, PA 17062

Excavating * Trucking
Backhoe * Shovel Dozer * Bulldozer

Bark Of The Town

Tim Ritzman 109 W. Sunbury St.
(717) 589-7387 Millerstown, PA 17062

www.barkofthetown.net

Stitch in Time Antique and Gift Mall

43 N. Market St.
Millerstown, PA 17062
717-589-7810
Open 7 days 10 to 5 and Fridays until 8!

Welcome to These New Business Sponsors

JACK GAUGHEN REALTOR® ERA®

Susan K. Belmont
REALTOR®

8407 Spring Road Suite 1
New Bloomfield, PA 17068
(717) 582-8104 Office
(717) 582-5313 Direct Dial
(717) 582-4064 Fax
(717) 512-2601 Cell
E-mail: susan.belmont@jgr.com
www.jgr.com



David J. Buriak D.D.S.

P.O. Box 129, 2 South Market St.
Millerstown, PA 17062

717-589-3361

Phone 717-535-5472
Fax 717-535-5709



BARNES BODY SHOP

Family Owned & Operated For Over 35 Years

Joe, Janice, Jeff & Jamie
Owners

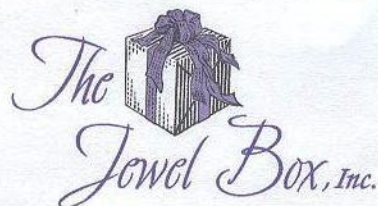
1405 Pinnacle Road
Thompsonstown, PA 17094

GREEN ACRES REALTY CO

DARIN J. LESH, Broker / Owner

Office: 717.567.3312
Fax: 717.567.2266
Cell: 717.576.5800

Green Acres Realty Co.
35 S. Second Street
Newport, PA 17074



Fine Jewelry & On-Site Jewelry Repairs

17 North Second Street
Newport, Pa 17074

717-567-6516
www.tbjjeweler.com

THE AGRONOMY CENTER SEEDS • FERTILIZER • PESTICIDES • LIME • GRAIN



P.O. Box 176
THOMPSONTOWN, PA 17094

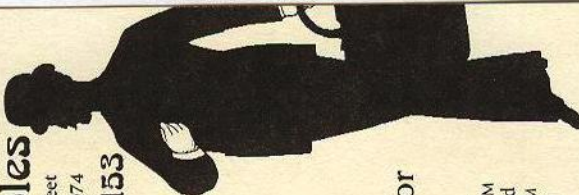
RICHARD E. BUCHER
PRESIDENT
(717) 444-3220 (HOME)

OFFICE PHONE (717) 535-5151
FAX (717) 535-4787
TOLL-FREE 1-800-227-7181

Carpetbagger Collectibles

12 S. Second Street
Newport, PA 17074

(717) 567-3153



Antiques
Gifts
Paint
Furniture
Home Decor

Sunday 12PM-4PM
Mon/Tues. 9AM-5PM
Wednesday Closed
Thurs/Fri. 9AM-5PM
Saturday 9AM-5PM



your source for unique gifts
One S. Second St., Newport



200 local artists
original paintings
jewelry, books
glass, pottery

Present this ad for **15% off your next purchase**
Not valid on gift cards/memberships. Not to be combined with other discounts.

Open M-F 9-4, Sat 9-1

717.567.7023

www.perrycountyarts.org

Business Sponsors & the Grange Serving Together

OFFICE HOURS BY APPOINTMENT



Kevin P. Koch, D.C.

223 MULBERRY STREET
NEWPORT, PA 17074
TELEPHONE: (717) 567-3158

FIRST NATIONAL BANK

Of Mifflintown

www.fnbmifflintown.com

West Perry 789.4500	Ickesburg 438.3050	New Bloomfield 582.7599
Loysville 789.2400	Shermans Dale 582.7424	Bloomfield Borough 582.3977

(717) 582-2949

JAMES E. SWENSON

SWENSON

FUELS

Inc.
L.P. GAS - FUEL OIL

3027 Cold Storage Rd.
New Bloomfield, PA 17068
PAOAGHIC PA006597



LAW OFFICE OF
SEAN POTTER

SEAN POTTER, ATTORNEY AND COUNSELOR AT LAW

15 East Main Street
P.O. Box 121
New Bloomfield, PA 17068

Phone: 717-582-0400
Fax: 717-582-0401
spotter@attorneypotter.com
www.attorneypotter.com



DAVID M. MYERS FUNERAL HOME, INC.

SECOND AND WALNUT STREETS
NEWPORT, PENNSYLVANIA 17074
(717) 567-3138

SALLY A. MYERS
Supervisor

JACK M. MYERS
Funeral Director

ESTABLISHED IN 1895
BY SAMUEL D. MYERS

HETRICK

Electric

MILLERSTOWN / PENNSYLVANIA

Services:
Residential
Commercial
Agricultural
Phones
CCTV

Brandon Hetrick
Owner

(717) 580 - 6563
(717) 589 - 3369

www.HetrickElectric.com

R. E. DAVIDSON & SON, INC.

OUTDOOR POWER EQUIPMENT



Polaris ATV's & Rangers
Toro-Wheelhorse
Echo • Columbia
DR Equipment



Off Route 17 between
Millerstown & Liverpool
Millerstown, PA 17062
Phone: (717) 444-3670

Routes 11 & 15 N.
Selinsgrove, PA 17870
Phone: (570) 743-6463

Email: redavidson@embarqmail.com
www.redavidson.com

CHARLES H. BURNS, INC.

Plumbing, Air Conditioning
Heating Supplies And Service

TV's — Appliances
Sales and Service
Antennas & Satellite

Phones:
589-3189
1-800-222-8933

Millerstown, PA 17062

Business Sponsors Help the Grange Serve Others

Rudy's GARAGE

752 SOUTH 3RD STREET
NEWPORT, PA 17074
717-567-9005

COMPLETE AUTO & TRUCK REPAIR
24 HOUR ROLL BACK SERVICE
COMPLETE LINE OF TIRES
PA STATE INSPECTION
FULL A/C REPAIR



STRAWSER'S EXCAVATION & HAULING SERVICE GENERAL CONSTRUCTION & DEVELOPMENT

Telephone
717-444-3525
320-2070

R. D. 1, Box 146
Liverpool, PA 17045



Tom Elliott
President

Services Include:

Web Site Design and Hosting
Web Site Usability Consulting
Internet Training Seminars
E-Commerce Solutions
SEO Consulting

Direct: 717-589-7812
Mobile: 757-646-1453
Toll Free: 866-421-3723
Fax: 717-589-7813
President@WebDrafter.com



Hunters Valley, Inc
150 Witmer Road
Liverpool, PA 17045
(717) 444-2149
FAX# 444-3338

Jay Witmer, President

PORT ROYAL
SPEEDWAY

JUNIATA
COUNTY FAIR

William R. Ritzman
VICE PRESIDENT

JUNIATA COUNTY AGRICULTURAL SOCIETY

P.O. Box 295
302 W. Sixth Street
Port Royal, PA 17082

Home (717) 589-9997
(717) 527-2303
(717) 527-4414
Fax (717) 527-2200
Cell (717) 443-1352



DANIEL S. HENGST, D.M.D.

24 North 2nd St.
Newport, PA 17074
Phone: (717) 567-3600

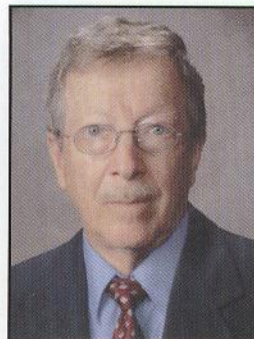


Ty Benner
Realtor®

Office (717) 436-8200
Home (717) 589-3843
Cell (717) 571-3843
Fax (717) 436-8205
Toll Free 888-436-8205
E-Mail ty@hower.cc



Hower & Associates
23 Industrial Circle
Mifflintown, PA 17059



YOUR Business could be listed here, too

For just \$60 per year, your business partners with the Grange to serve the larger community.....

For details, call 717-589-3782

Welcome to our Newest Grange Business Sponsors

Safe Haven Skilled Services, LLC

"where staying at home is a shared goal"

- Comprehensive Medical Assessment
- Wound Care
- Diabetic Teaching
- Medication Management
- Medication Teaching
- PT/OT
- Incontinence Management



Sandra Hardy, CSA
Agency Director/CEO



Certified
Senior Advisor (CSA)™

717-582-4110 Office
717-433-1570 Cell

14-B W. Main Street
New Bloomfield, PA 17068

Safe Haven Quality Care, LLC

providing non-medical in home services

- Personal Care
- Respite
- Homemaking
- Chores
- Errands
- Companionship



Leslie Hardy, CSA
Chief Financial Officer



Certified
Senior Advisor (CSA)™

717-582-9977 Office
717-991-3621 Cell

1566 New Bloomfield Rd.
New Bloomfield, PA 17068

Update on Joint Grange-Masons Cooperation

One of the realities that your Grange leaders have faced is that the limited number of currently active Grange members can no longer do everything that is needed to maintain our property and raise the funds needed for all the expenses. That's why we entered into talks over a year ago with the local Masonic groups in Newport.

Two Masonic groups – *Newport F&AM Lodge #381 and Newport Royal Arch Chapter #238* - have met in rented space on the upper floor of a building just off the square in Newport for many years. The condition of that meeting room, the flights of steps to reach it, unreliable heat or cooling, and the lack of parking in the vicinity have prompted these groups to approach the Grange to share use of our facilities.

The Grange membership approved a preliminary agreement with the Lodge at our August 2010 meeting and authorized the Executive Committee to work out final details. Since we are not selling real estate, the agreement does not require any action or approval by the State Grange. In lieu of paying rental fees, the agreement requires the Lodge to provide volunteers for all fund raising and for maintaining the property.

Four Grange representatives and four Lodge representatives make up a Joint Operating Committee to manage the shared use of our property, its maintenance and the fund raising. A separate bank account will be established to keep these receipts and expenses separate from finances that pertain specifically to either the Grange or the Lodge. In recognition of the Grange's capital investment in the property, the joint agreement calls for the Grange to receive 50% of any excess receipts over expenditures at the end of each fiscal year. The remaining 50% of the funds not needed for immediate expenses will be put aside for future capital improvements to the facilities that will continue to be owned by Perry Valley Grange.

The Grange representatives on the Joint Operating Committee are: Peg Bolton, Doug Bonsall, Barbara McMillen and Carol Rhoades. Carol has agreed to become the Financial Secretary of the Joint Committee and Doug will be the Treasurer. The Chair, Vice Chair and Recording Secretary of the Committee are members of the Lodge.

The Lodge membership has given its approval to the agreement and is now awaiting final approval from the Grange Lodge of Pennsylvania to move the official meeting place of the local Lodge & Chapter from Newport to the Grange Hall. Not anticipating any issues since input has been received from Masonic officials throughout the past year's planning process, the Lodge & Chapter will begin holding their regular meetings 2 or 3 times per month in the Grange Hall starting in November. You'll notice these dates have been added to the Grange Hall calendar which appears on page 13 of this newsletter.

The shared use of the Grange Hall is a "win-win" situation for all involved. The Grange will be able, at least for the foreseeable future, to continue owning the property for our use and that of the community. The Lodge will have a handicap accessible, climate controlled facility in which to meet. The work will be shared by a much larger pool of volunteers than either organization has on its own.

Moving into this shared use means we have the opportunity to meet and work with many other persons who, like we Grangers, are concerned about the welfare of our community. It also means we will have to adapt to new personalities and new (perhaps better!) ways of doing things. This is an exciting time; we hope more Grangers will come forward to get involved and become part of history in the making.

PA Dutch Dinner



Menu

*Homemade Chicken Potpie
Ham & Schnitz
Stuffed Pig Stomach
Pepper Cabbage; Chow Chow
Homemade Bread/Apple Butter
Shoofly Pie
Beverages*

Sat., Nov. 13, 2010

Perry Valley Grange Hall

2 Miles East of Millerstown, Perry County
West Juniata Parkway & Owl Hollow Rd

Serving from 4 PM while supply lasts

Serving help provided by local FFA Members

All you can eat with dessert included

Tickets available at the door; Take outs available

Adults - \$10

Children: (ages 6-12) - \$5; (ages 5 & under) – FREE

Details @ www.perryvalleygrange.org or 589-3369

Coming Events at Perry Valley Grange

November 2010

1	Executive Committee Meeting – 7 p.m.
2	General Election Day – Grange Hall is polling site for Greenwood Township
5	Grange Meeting – 7:00 PM Dessert reception Social Committee – Renee Hetrick (chair), Jonathan Mansch, Henry & Evelyn Newlin, Sue Zettlemoyer Business meeting – adoption of annual calendar/budget, reception of new members & draping of the charter Program – “A Visit to South America” by Linda Byers of Millerstown
6	Hall rental – Trinity United Church of Christ Basket Bingo; Grange operates food stand
7	Sauerkraut Making – 3 p.m.
9	Lodge meeting
11	Lodge meeting
12	Work night for public dinner – 6:30 PM
13	Public Penna. Dutch Dinner Serving begins at 4 PM (See page 12)
15	Joint Grange-Lodge Operating Committee
18	Chapter meeting
20	Banquet – Newport Masonic Lodge
30	Pomona Grange meeting at Oliver Grange - 7 PM

December 2010

3	Banquet – 4-H Horse & Pony Club
4	Banquet – Mifflintown Bank Employees
8	Cookie Baking Night
9	Lodge meeting
10	Millerstown Christmas Celebration – <i>Grange hosts reception at Cochran-Anspach House & sponsors carriage rides</i>
11	Banquet – Miller family
12	Rental – Dressler Family
14	Lodge meeting
15	Grange Holiday Outing (details below) Dinner Out at Bread of Life Restaurant
16	Chapter meeting
19	Lodge Christmas Toy distribution
28	Pomona Christmas Party @ Shermanata
30	Work day for New Year’s public dinner

Holiday Events



The Grange is again supporting **Christmas in Millerstown** on Friday, Dec. 10th by sponsoring a reception at the Cochran-Anspach House and providing financial assistance for the horse & carriage rides. Contact Carol Gantt (567-6725) if you can volunteer your help with the reception or as a house tour guide.

Cookie Baking - Dozens of homemade cookies and candy are needed for the reception. Again this year we are going to have a group cookie baking event at the Grange to bake for this event, while providing a nice fellowship opportunity for everyone participating. So, prepare your favorite cookie batter or dough and come to the Grange Hall anytime starting at 6 p.m. on Wednesday, Dec. 8th. Plenty of warm cookie samples are promised and hopefully there will be enough cookies baked that everyone can take home a small assortment.

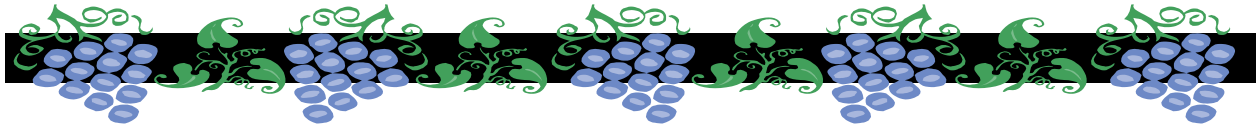
This year for our **Holiday Outing** will be enjoy dinner out together at the Bread of Life Restaurant in McAlisterville on Wednesday, December 15th. We will gather at 6:45 p.m. and order from the menu Dutch-treat. We will ask for your reservation when the Call Committee contacts you; if you prefer, you may call Doug Bonsall (921—1957) to tell us how many from your family will be joining in this evening of good food and fellowship.

Financial Report

September-October 2010



Checking Balance from 8/2010	\$11,401.01
PLUS:	
Receipts – September 2010.....	+ 4,549.57
Receipts – October 2010	+ 4,245.95
LESS:	
Expenditures – September 2010.....	- 3,501.49
Expenditures – October 2001.....	- 3,456.50
Checking Balance to 11/2010	\$13,238.54
Savings Balance	\$45,557.29



Inside This Newsletter You Can Read About....

Page 1..... **New Officers; President' Message**
Page 2..... **New Grange Cookbook; In Memory**
 **Pictures from Family Fun Night**
Page 3.....**2011 Dues; Special Days**
Pages 4.....**Installation & Dumpling Pictures**
Page 5-10.....**Business Sponsors**

Page 11**Our Newest Business Sponsors**
 **Update on Grange-Masons Cooperation**
Page 12**Pennsylvania Dutch Dinner Poster**
Page 13**November-December Calendar**
 **Holiday Events; Financial Report**

Perry Valley Grange Vision

Foster an atmosphere where individuals can grow spiritually, intellectually and socially and, through that growth, improve themselves, their families, communities and the nation.

Perry Valley Grange Ideals

A good Grange member:

Places faith in God,
Looks forward to the future,
Helps those in need, and
Is loyal to family, community and nation.

Perry Valley Grange #1804, Inc.

c/o Douglas A. Bonsall
300 Swatara Street, PO Box 765
Dauphin, PA 17018-0765



**November-December 2010
Newsletter**